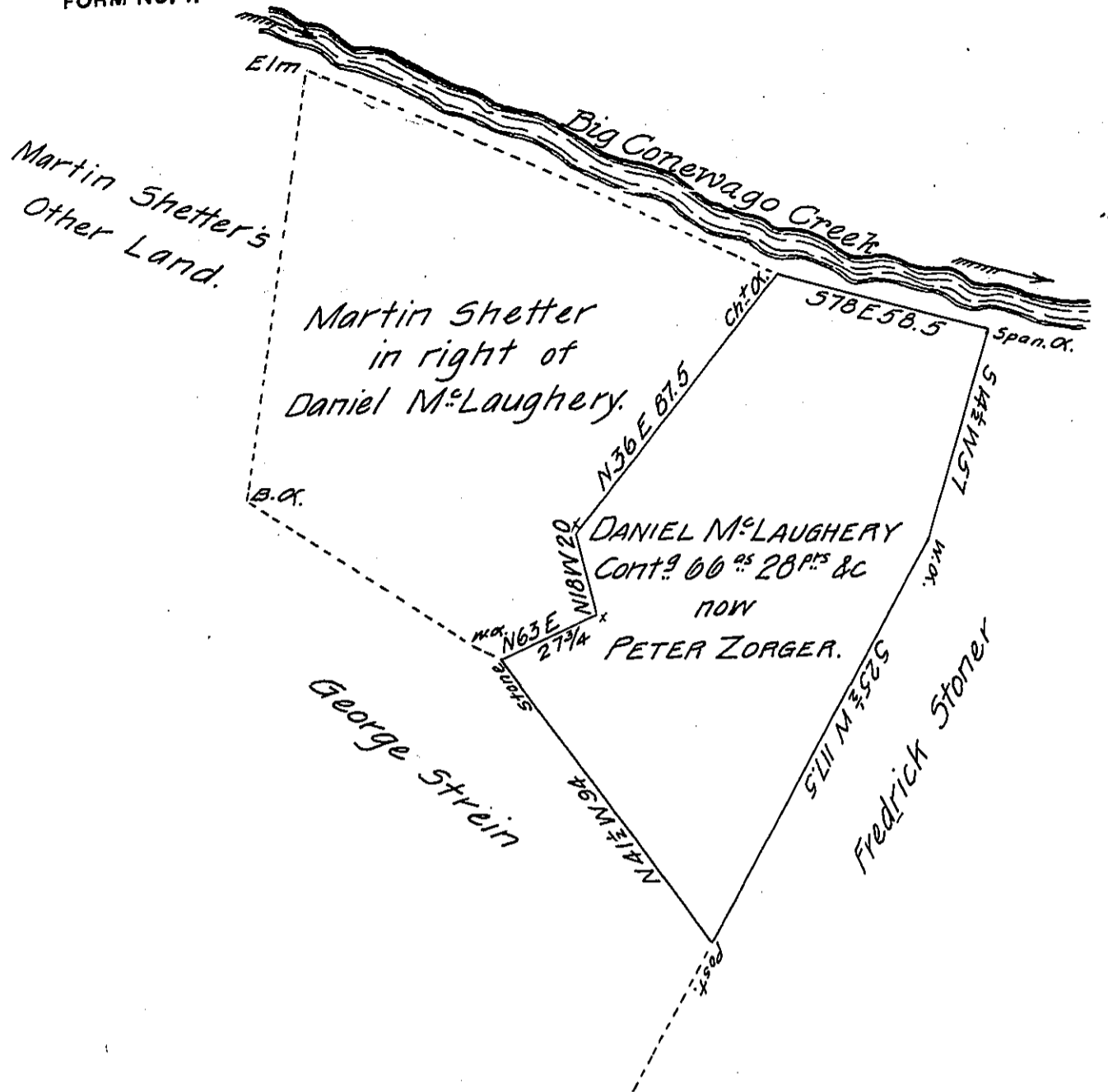


FORM NO. 1.



A Draught of a Piece of Land Situate in Conawago Township in the County of York. Containing as above Set forth 66⁹³ 28^{PS} and allowances &c part of 141⁹³ 93^{PRS} &c which was originally surveyed in pursuance of a Warrant granted to Daniel McLaughery for — dated the 31st day of October 1745. And since resurveyed by John Forsyth late D. S. And now on the 31st day of October 1864 being requested by Peter Zorger the present owner to make return of the above for Patenting &c.

J John Becker S.V.R.

James P. Barr Esq.

for Benj^r Leese D.^s S.

Surveyor General.

at Harrisburg,

Pa.

IN TESTIMONY that the above is a copy of the original remaining on file in the Department of Internal Affairs of Pennsylvania, made conformably to an Act of Assembly approved the 16th day of February, 1833, I have hereunto set my Hand and caused the Seal of said Department to be affixed at Harrisburg, this sixteenth day of April 1906.

Isaac N. Brown
Secretary of Internal Affairs.